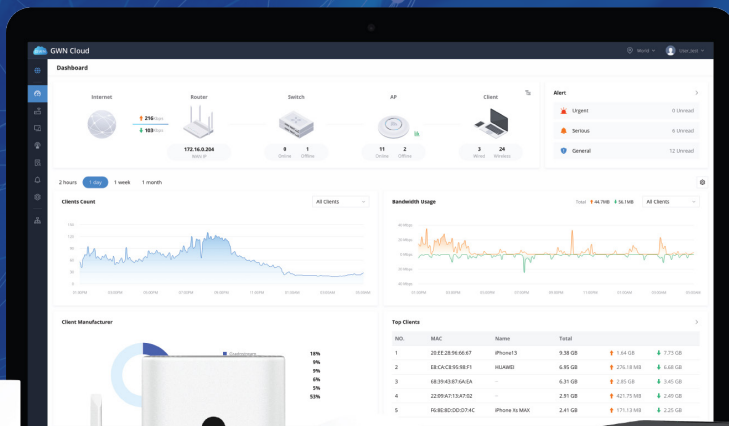




GRANDSTREAM
CONNECTING THE WORLD

Grandstream vs Ubiquiti Comparison Guide (Wi-Fi 6 APs and Switches)





GRANDSTREAM

CONNECTING THE WORLD

Wi-Fi 6 Access Points *Grandstream*



Ubiquiti





GWN7660 vs Unifi U6+



3 Free Wi-Fi Management Options

The GWN7660 offers 3 free management options: cloud based (GWN.Cloud), software based (GWN.Manager) and embedded (built-in to the web UI). This makes for easy management that is accessible from anywhere at anytime. Unifi U6+ has only one management option via the Controller which is free, however the cloud hosted option needs to be paid for leading to extra costs.



Supported Clients

The GWN7660 supports 500 clients thereby allowing more clients to connect to the Wi-Fi at any given time particularly in high density areas as compared to the Unifi U6+ that supports upto 300 clients.



List Price

The List Price of the GWN7660 is \$109 which is slightly cheaper than the Unifi U6+ that has a list price of \$129 even though the features are fairly similar and the GWN7660 even has superior features in certain aspects. This shows that the GWN7660 offers better value for money.

	 GWN7660	 Unifi U6+
Wi-Fi 6	Dual-Band Wi-Fi 6	Wi-Fi 4/ Wi-Fi 5/ Wi-Fi 6
Supported Clients	500+	300+
Network Interfaces	2x autosensing 10/100/1000 Base-T Ethernet Ports	1x GbE RJ45 port
2.4GHz Throughput	573.5Mbps	573.5Mbps
5GHz Throughput	1.2Gbps	2.4Gbps
Wireless Throughput	1.77Gbps	2.973Gbps
Antennas	2 dual band internal antennas 2.4GHz, gain 3dBi 5 GHz, gain 4dBi	Dual-Band Antennas 2.4GHz: 3 dBi 5GHz: 5.4 dBi
MU-MIMO	2x2:2	2x2:2
Wireless Security	WEP, WPA/WPA2-PSK, WPA/WPA2 Enterprise (TKIP/AES); WPA3, anti-hacking secure boot and critical data/control lockdown via digital signatures, unique security certificate and random default password per device	WPA-PSK, WPA-Enterprise (WPA/WPA2/WPA3)
QoS	Yes	Yes
SSIDs	32 total, 16 per radio	16 total, 8 per radio
Management	3 free options: cloud-based (GWN.Cloud), software-based (GWN.Manager) and embedded	Managed with Unifi Controller
Compliance	FCC, CE, RCM, IC	FCC, CE, IC
List Price	\$109	\$129



GWN7661 vs Unifi U6 In-Wall



3 Free Wi-Fi Management Options

The GWN7661 offers 3 free management options: cloud based (GWN.Cloud), software based (GWN.Manager) and embedded (built-in to the web UI). This makes for easy management that is accessible from anywhere at anytime. Unifi U6 In-Wall has only one management option via the Unifi Controller which is free, however the cloud hosted option needs to be paid for leading to extra costs.



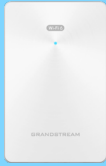

Supported Clients

The GWN7661 supports 500 clients thereby allowing more clients to connect to the Wi-Fi at any given time particularly in high density areas as compared to the Unifi U6 In-Wall that supports upto 300 clients.



List Price

The List Price of the GWN7661 is \$99 which is significantly cheaper than the Unifi U6 In-Wall that has a list price of \$205. This shows that the GWN7661 offers much better value for money as the features are superior in various aspects.

	 GWN7661	 Unifi U6 In-Wall
Wi-Fi 6	Dual-Band Wi-Fi 6	Wi-Fi 4/ Wi-Fi 5/ Wi-Fi 6
Supported Clients	500	300
Network Interfaces	1x 10/100/1000M uplink Ethernet port with PoE/ PoE+ 2x 10/100/1000M Ethernet port with PSE 1x 10/100/1000M Ethernet port	1x GbE RJ45 port (Data in) 4x GbE RJ45 ports (Data out) 1x PoE in 1x PoE out
2.4GHz Throughput	573.5Mbps	573.5Mbps
5GHz Throughput	1.2Gbps	4.8Gbps
Wireless Throughput	1.77Gbps	5.373Gbps
Antennas	4 single band internal antennas 2.4GHz x 2, gain 3.30dBi, gain 3.51dBi 5GHz x 2: gain 4.79dBi, gain 5.37dBi	Dual-Band Antennas 2.4GHz: 5 dBi 5GHz: 5.9dBi
MU-MIMO	2x2:2	2x2:2 on the 2.4Ghz band and 4x4:4 on the 5Ghz band
Wireless Security	WEP, WPA/WPA2-PSK, WPA/WPA2 Enterprise (TKIP/AES); WPA3, anti-hacking secure boot and critical data/control lockdown via digital signatures, unique security certificate and random default password per device	WPA-PSK, WPA-Enterprise (WPA/WPA2/WPA3)
QoS	Yes	Yes
SSIDs	32 total, 16 per radio	16 total, 8 per radio
Management	3 free options: cloud-based (GWN.Cloud), software-based (GWN.Manager) and embedded	Managed with Unifi Controller
Compliance	FCC, CE, RCM, IC, UKCA	FCC, CE, IC
List Price	\$99	\$205



GWN7662 vs Unifi U6 Pro



3 Free Wi-Fi Management Options

The GWN7662 offers 3 free management options: cloud based (GWN.Cloud), software based (GWN.Manager) and embedded (built-in to the web UI). This makes for easy management that is accessible from anywhere at anytime. Unifi U6 Pro has only one management option via the Unifi Controller which is free, however the cloud option needs to be paid for leading to extra costs.



Coverage Range

The GWN7662 has a coverage range of 175-meters which is superior to the Unifi U6 Pro that has a coverage range of 140-meters thereby giving the GWN7662 the ability to extend internet signals better than the Unifi U6-Pro.



List Price

The List Price of the GWN7662 is \$139 which is slightly cheaper than the Unifi U6 Pro that has a list price of \$159 even though the features are fairly similar and the GWN7662 is superior in certain aspects. This shows that the GWN7662 offers better value for money.

	 GWN7662	 Unifi U6 Pro
Wi-Fi 6	Dual-Band Wi-Fi 6	Dual-Band Wi-Fi 6
Supported Clients	256	300+
Coverage Range	175 meters	140 meters
Network Interfaces	1x autosensing 10/100/1000 Base-T Ethernet Ports 1x autosensing 10/100/1000/2500 Base-T Ethernet Port	1x Gbe RJ45 port
2.4GHz Throughput	573.5Mbps	573.5Mbps
5GHz Throughput	4.8Gbps	4.8Gbps
Wireless Throughput	5.38Gbps	5.38Gbps
Antennas	6 single frequency internal antennas 2.4GHz 3.65dBi 5GHz 5.26dBi	Antennas: 2.4GHz 4dBi 5GHz 6dBi
MU-MIMO	2x2:2 2.4GHz (DL/UL MU-MIMO) 4X4:4 5GHz (DL/UL MU-MIMO)	2x2:2 2.4GHz (UL MU-MIMO) 4x4:4 5GHz (DL/ULMU-MIMO)
Wireless Security	WEP, WPA/WPA2-PSK, WPA/WPA2 Enterprise (TKIP/AES); WPA3, anti-hacking secure boot and critical data/control lockdown via digital signatures, unique security certificate and random default password per device	WPA-PSK, WPA-Enterprise (WPA/WPA2/WPA3)
QoS	Yes	Yes
SSIDs	32 total, 16 per radio	16 total, 8 per radio
Management	3 free options: cloud-based (GWN.Cloud), software-based (GWN.Manager) and embedded	Managed with Unifi Controller
Compliance	FCC, CE, RCM, IC, UKCA	FCC, CE, IC, MIC
List Price	\$139	\$159



GWN7664 vs Unifi U6 LR



3 Free Wi-Fi Management Options

The GWN7664 offers 3 free management options: cloud based (GWN.Cloud), software based (GWN.Manager) and embedded (built-in to the web UI). This makes for easy management that is accessible from anywhere at anytime. Unifi U6 LR has only one management option via the Unifi Controller which is free, however the cloud hosted option needs to be paid for leading to extra costs.



Double the 2.4GHz Throughput

The GWN7664 provides nearly double the network throughput on the 2.4GHz band (1.147Gbps) than the Unifi U6 LR which has a network throughput of 600Mbps.





2.5 Gigabit Ethernet Port & Higher Traffic Loads

The GWN7664 provides a 2.5G network port and a 1G port whereas the Unifi U6 LR provides only a 1x 1G port. This allows the GWN7664 to support a higher traffic load, while creating potential bandwidth bottlenecks for competition.



Supported Clients

The GWN7664 supports 750 clients thereby providing more bandwidth and Wi-Fi speed for clients compared to the Unifi U6 LR which only supports 350 clients.

	 GWN7664	 Unifi U6 LR
Wi-Fi 6	Dual-Band Wi-Fi 6	2.4GHz band: Wi-Fi 4 / 5GHz band: Wi-Fi 6
Supported Clients	750	350
Network Interfaces	1x 2.5G Port and 1x 1G Port	1x 1G Port
2.4GHz Throughput	1.147Gbps	600 Mbps
5GHz Throughput	2.4Gbps	2.4 Gbps
Wireless Throughput	3.547Gbps	3 Gbps
MU-MIMO	4x4:4	4x4:4
Wireless Security	WEP, WPA/WPA2-PSK, WPA/WPA2 Enterprise (TKIP/AES); WPA3, anti-hacking secure boot and critical data/control lockdown via digital signatures, unique security certificate and random default password per device	WPA-PSK, WPA-Enterprise (WPA/WPA2/WPA3)
SSIDs	32 total, 16 per radio	16 total, 8 per radio
Management	3 free options: cloud-based (GWN.Cloud), software-based (GWN.Manager) and embedded	Managed with Unifi Controller
Compliance	FCC, CE, RCM, IC, UKCA	FCC, CE, IC



GWN7664LR vs Unifi U6 Mesh



3 Free Wi-Fi Management Options

The GWN7664LR offers 3 free management options: cloud based (GWN.Cloud), software based (GWN.Manager) and embedded (built-in to the web UI). This makes for easy management that is accessible from anywhere at anytime. Unifi U6 Mesh has only one option via the Unifi Controller which is free, however the cloud hosted option needs to be paid for leading to extra costs.



Double the 2.4GHz Throughput

The GWN7664LR provides nearly double the network throughput on the 2.4GHz band (1.147Gbps) than the Unifi U6 Mesh which has a network throughput of 573.5Mbps.




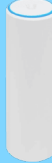
Coverage Range

The GWN7664LR has a coverage range of 300-meters which is superior to the Unifi U6 Mesh that has a coverage range of 140-meters thereby giving the GWN7664LR the ability to extend internet signals better than the Unifi U6 Mesh.



Supported Clients

The GWN7664LR supports 750+ clients thereby providing more bandwidth and Wi-Fi speed for clients compared to the Unifi U6+ which only supports 300+ clients.

	 GWN7664LR	 Unifi U6 Mesh
Wi-Fi 6	Dual-Band Wi-Fi 6	Wi-Fi 4/ Wi-Fi 5/ Wi-Fi 6
Supported Clients	750+	300+
Coverage Range	300 meters	140 meters
Network Interfaces	1x 1G Port and 1x 2.5G Port, support 2.5Gbps aggregate wired throughput	1x Gbe RJ45 port
2.4GHz Throughput	1.147Gbps	573.5 Mbps
5GHz Throughput	2.4Gbps	4.8 Gbps
Wireless Throughput	3.547Gbps	5.373 Gbps
Antennas	4 dual band external antennas 2.4GHz, gain 3.5dBi 5 GHz, gain 3.5dBi	Antennas 2.4GHz, gain 3dBi 5GHz, gain 5dBi
MU-MIMO	4x4:4	2 x 2 (UL MU-MIMO) 4 x 4 (DL/UL MU-MIMO)
Wireless Security	WEP, WPA/WPA2-PSK, WPA/WPA2 Enterprise (TKIP/AES); WPA3, anti-hacking secure boot and critical data/control lockdown via digital signatures, unique security certificate and random default password per device	WPA-PSK, WPA-Enterprise (WPA/WPA2/WPA3)
SSIDs	32 total, 16 per radio	16 total, 8 per radio
Management	3 free options: cloud-based (GWN.Cloud), software-based (GWN.Manager) and embedded	Managed with Unifi Controller
Compliance	FCC, CE, RCM, IC, UKCA	FCC, CE, IC



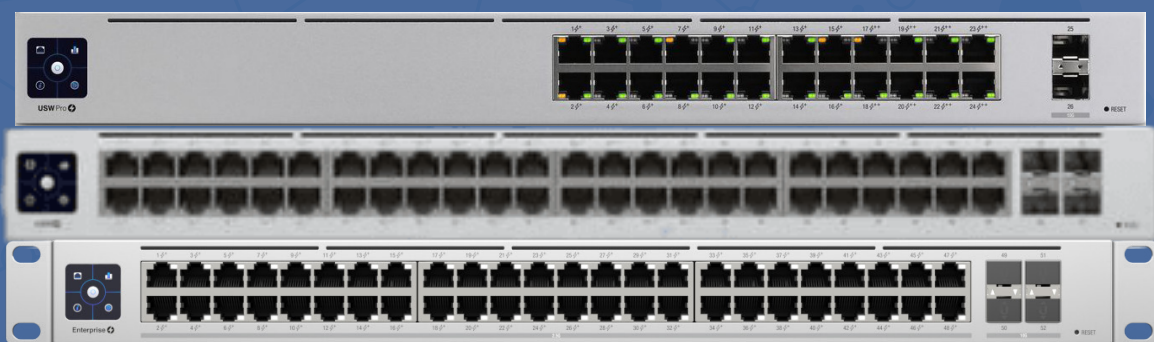
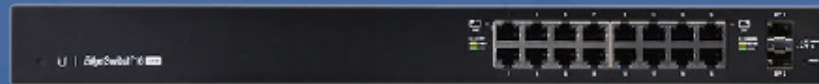
GRANDSTREAM

CONNECTING THE WORLD

Network Switches *Grandstream*



Ubiquiti





GWN7801P vs Unifi ES-8-150W




3 Free Wi-Fi Management Options

The GWN7801P offers 3 free management options: cloud based (GWN.Cloud), software based (GWN.Manager) and embedded (built-in to the web UI). This makes for easy management that is accessible from anywhere at anytime. Unifi ES-8-150W has only one management option via the Unifi Controller which is free, however the cloud hosted option needs to be paid for leading to extra costs.



Gigabit Ports

The GWN7801P and Unifi ES-8-150W have the same number of ethernet ports, SFP ports and 1 serial console port. However the GWN7801P has an auxillary port whereas the Unifi ES-8-150W does not. This is advantageous for the GWN7801P as the auxillary port can function as a backup console port.

	 GWN7801P	 Unifi ES-8-150W
Gigabit Ethernet Ports	8	8
Gigabit SFP Ports	2	2
Serial Console Port	1	1
Number of PoE Ports	8	8
Integrated Power Supply	150W	150W
Max Output Power PoE Port	30W	34.2W (PoE+), 17W (PoE)
Max Total PoE Output Power	120W	150W
PoE Standard	IEEE 802.3af/at	IEEE 802.3af/at
Total Non-Blocking Throughput	10 Gbps	10 Gbps
Switching Capability	20 Gbps	20 Gbps
Forwarding Rate	14.88 Mpps	14.88 Mpps
Switch Configuration	4K VLAN supported, port-based VLAN, VLAN tagging and spanning tree configuration	4K VLAN supported
QoS/ACL	Yes	Yes
Fan	Fanless (no noise)	Fanless
Mounting	Desktop and Wall Mountable	Wallmountable with Mount Brackets (Included) Desktop-Mountable
Compliance	FCC, CE, RCM, IC, UKCA	CE, FCC, IC
Management	Device management via SNMP, RMON, CLI, HTTPS, TR069, GWN Manager, GWN.Cloud	Device management via UniFi Controller



GWN7802P vs Unifi ES-16-150W



3 Free Wi-Fi Management Options

The GWN7802P offers 3 free management options: cloud based (GWN.Cloud), software based (GWN.Manager) and embedded (built-in to the web UI). This makes for easy management that is accessible from anywhere at anytime. Unifi ES-16-150W has only one management option via the Unifi Controller which is free, however the cloud hosted option needs to be paid for leading to extra costs.




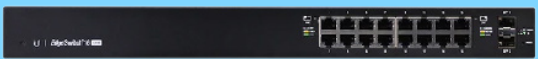
PoE Power Supply

The max total PoE output power of the GWN7802P is 240W which is significantly higher than the Unifi ES-16-150W that has a max total PoE output power of 150W. This indicates that the GWN7802P is more powerful than the Unifi ES-16-150W.



Forwarding Rate

The GWN7802P has a higher forwarding rate of 29.76 mega packets per second than the Unifi ES-16-150W that has a forwarding rate of 26.78 mega packets per second which means that the GWN7802P will process the number of network packets quicker.

	 GWN7802P	 Unifi ES-16-150W
Gigabit Ethernet Ports	16	16
Gigabit SFP Ports	4	2
Serial Console Port	1	1
Number of PoE Ports	16	16
Integrated Power Supply	270W	150W
Max Output Power PoE Port	30W	34.2W (PoE+), 17W (PoE)
Max Total PoE Output Power	240W	150W
PoE Standard	IEEE 802.3af/at	IEEE 802.3af/at
Total Non-Blocking Throughput	20 Gbps	26 Gbps
Switching Capability	40 Gbps	52 Gbps
Forwarding Rate	29.76 Mpps	26.78 Mpps
Switch Configuration	4K VLAN supported, port-based VLAN, VLAN tagging and spanning tree configuration	4K VLAN supported
QoS/ACL	Yes	Yes
Fan	1 Fan	Has fans (runs at booth for 10 seconds)
Mounting	Desktop, Wall-mount or Rack-mount (rack-mount brackets included)	Rackmountable with Rack-Mount Brackets (Included)
Compliance	FCC, CE, RCM, IC, UKCA	CE, FCC, IC
Management	Device management via SNMP, RMON, CLI, HTTPS, TR069, GWN Manager, GWN.Cloud	Device management via UniFi Controller



GWN7803P vs EdgeSwitch-24-250W



3 Free Wi-Fi Management Options

The GWN7803P offers 3 free management options: cloud based (GWN.Cloud), software based (GWN.Manager) and embedded (built-in to the web UI). This makes for easy management that is accessible from anywhere at anytime. EdgeSwitch-24-250W has only one management option via the UniFi Controller which is free, however the cloud hosted option needs to be paid for leading to extra costs.



Gigabit Ports

Both the GWN7803P and EdgeSwitch-24-250W have 24 Gigabit Ethernet PoE Ports. The GWN7803P has 4 SFP Ports whereas the EdgeSwitch-24-250W has only 2 SFP Ports. Lastly, the GWN7803P has an auxillary port, however the EdgeSwitch-24-250W does not.



Forwarding Rate

The GWN7803P has a forwarding rate of 41.66 mega packets per second proving that the GWN7803P will process the number of network packets quicker than the EdgeSwitch-24-250W that has a forwarding rate of 38.69 mega packets per second.



GWN7803P



EdgeSwitch-24-250W

	GWN7803P	EdgeSwitch-24-250W
Gigabit Ethernet Ports	24	24
Gigabit SFP Ports	4	2
Serial Console Port	1	1
Number of PoE Ports	24	24
Integrated Power Supply	400W	250W
Max Output Power PoE Port	30W	34.2W (PoE+), 17W (PoE)
Max Total PoE Output Power	360W	250W
PoE Standard	IEEE 802.3af/at	IEEE 802.3af/at
Total Non-Blocking Throughput	28 Gbps	26 Gbps
Switching Capability	56 Gbps	52 Gbps
Forwarding Rate	41.66 Mpps	38.69 Mpps
Switch Configuration	4K VLAN supported, port-based VLAN, VLAN tagging and spanning tree configuratio	4K VLAN supported
QoS/ACL	Yes	Yes
Fan	2 Fans	Has fans (runs all the time and ramp up and down)
Mounting	Desktop, Wall-mount or Rack-mount (rack-mount brackets included)	Rackmountable
Compliance	FCC, CE, RCM, IC, UKCA	CE, FCC, IC
Management	Device management via SNMP, RMON, CLI, HTTPS, TR069, GWN Manager, GWN.Cloud	Device management via UniFi Controller



GWN7806 vs Unifi-USW-48



3 Free Wi-Fi Management Options

The GWN7806 offers 3 free management options: cloud based (GWN.Cloud), software based (GWN.Manager) and embedded (built-in to the web UI). This makes for easy management that is accessible from anywhere at anytime. Unifi-USW-48 has only one management option via the Unifi Controller which is free, however the cloud hosted option needs to be paid for leading to extra costs.



Gigabit Ports

Both the GWN7806 and the Unifi-USW-48 have 48 Gigabit Ethernet Ports. The GWN7806 has 6 Gigabit SFP Ports whereas the Unifi-USW-48 has only 4 Gigabit SFP Ports. Lastly the GWN7806 has an auxillary port, whereas the Unifi-USW-48 does not.



Forwarding Rate

The GWN7806 has a forwarding rate of 160.704 mega packets per second proving that the GWN7806 will process the number of network packets quicker than the Unifi-USW-48 that has a forwarding rate of 77.376 mega packets per second which is less than double that of the GWN7806



List Price

The GWN7806 is priced at \$429 which is cheaper than that of the Unifi-USW-48 that has a list price of \$519 even though the features of the GWN7806 are far superior. This shows that the GWN7806 is a more cost effective model.



GWN7806

Unifi-USW-48

	GWN7806	Unifi-USW-48
Gigabit Ethernet Ports	48	48
Gigabit SFP Ports	6	4
Serial Console Port	1	1
Integrated Power Supply	60W	40W
Total Non-Blocking Throughput	108 Gbps	52 Gbps
Switching Capability	216 Gbps	104 Gbps
Forwarding Rate	160.704 Mpps	77.376 Mpps
Switch Configuration	4K VLAN supported, port-based VLAN, VLAN tagging and spanning tree configuratio	Network/VLAN configuration, 802.1X control and radius VLAN and spanning tree configuration
QoS/ACL	Yes	Yes
Fan	3 Fans	Fanless (no noise)
Mounting	Desktop and Rack mount (rack-mounting kits included)	Wall-mountable with mount brackets (kit included)
Compliance	FCC, CE, RCM, IC, UKCA	CE, FCC, IC
Management	Device management via SNMP, RMON, CLI, HTTPS, TR069, GWN Manager, GWN.Cloud	Device management via UniFi Controller
List Price	\$429	\$519



GWN7806P vs Unifi-USW-48-PoE



3 Free Wi-Fi Management Options

The GWN7806P offers 3 free management options: cloud based (GWN.Cloud), software based (GWN.Manager) and embedded (built-in to the web UI). This makes for easy management that is accessible from anywhere at anytime. Unifi-USW-48-PoE has only one management option via the Unifi Controller which is free, however the cloud hosted option needs to be paid for leading to extra costs.



Gigabit Ports

The GWN7806P has 48 PoE Ports and 6 SFP Ports, which is more than the Unifi USW-48-PoE which has 32 PoE ports and 4 SFP Ports. Additionally the GWN7806P has an auxillary port whereas the Unifi USW-48-PoE does not.



Forwarding Rate

The GWN7806P has a forwarding rate of 160.704 Mpps which is more than double of the Unifi USW-48-PoE which has a forwarding rate of 77.38 Mpps. This indicates that the GWN7806P will process the number of network packets at double the speed of the Unifi USW-48-PoE.



GWN7806P



Unifi-USW-48-PoE

Gigabit Ethernet Ports	48	32 RJ45 ports with 802.3af/at and 16 RJ45 ports
Gigabit SFP Ports	6	4
Serial Console Port	1	1
Number of PoE Ports	48	32
Integrated Power Supply	470W	240W
Max Output Power Per PoE Port	30W	32W
Max Total PoE Output Power	400W	195W
PoE Standard	IEEE 802.3af/at	IEEE 802.3af/at
Total Non-Blocking Throughput	108 Gbps	52 Gbps
Switching Capability	216 Gbps	104 Gbps
Forwarding Rate	160.704 Mpps	77.38 Mpps
Switch Configuration	4K VLAN supported, port-based VLAN, VLAN tagging and spanning tree configuratio	Network/VLAN configuration, 802.1X control and radius VLAN and spanning tree configuration
QoS/ACL	Yes	Yes
Fan	3 Fans	Fanless (no noise)
Mounting	Desktop and Rack mount (rack-mounting kits included)	Wall-mountable with mount brackets (kit included)
Compliance	FCC, CE, RCM, IC, UKCA	CE, FCC, IC
Management	Device management via SNMP, RMON, CLI, HTTPS, TR069, GWN Manager, GWN.Cloud	Device management via UniFi Controller



GWN7811P vs Unifi-USW-Enterprise-8-PoE



3 Free Wi-Fi Management Options

The GWN7811P offers 3 free management options: cloud based (GWN.Cloud), software based (GWN.Manager) and embedded (built-in to the web UI). This makes for easy management that is accessible from anywhere at anytime. Unifi-USW-Enterprise-8-PoE has only one management option via the Unifi Controller which is free, however the cloud hosted option needs to be paid for leading to extra costs.



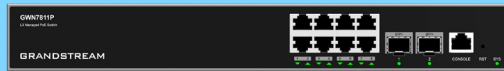
Mounting

The GWN7811P is desktop mountable whilst also being wall mountable and rack mountable. On the contrary, the Unifi-USW-Enterprise-8-PoE is only wall mountable. This indicates that the GWN7811P can be set up in a much easier manner as compared to the Unifi-USW-Enterprise-8-PoE



List Price

The GWN7811P is the most cost effective model out of the 2 having a list price of \$205. The Unifi USW-Enterprise-8-PoE is more than double of the GWN7811P having a price point of \$479 even though the features are somewhat similar and in some areas the GWN7811P is superior.



GWN7811P



Unifi-USW-Enterprise-8-PoE

	GWN7811P	Unifi-USW-Enterprise-8-PoE
Gigabit Ethernet Ports	8	8 2.5GbE, PoE+ RJ45 Ports
Gigabit SFP Ports	2 (10 Gigabit SFP+ Ports)	2 (10 Gigabit SFP+ Ports)
Serial Console Port	1	-
Number of PoE Ports	8	8
Max Output Power Per PoE Port	30W	32W
Max Total PoE Output Power	120W	120W
PoE Standard	IEEE 802.3af/at	IEEE 802.3af/at
Total Non-Blocking Throughput	28 Gbps	40 Gbps
Switching Capability	56 Gbps	80 Gbps
Forwarding Rate	41.644 Mpps	59.52 Mpps
Switch Configuration	4k VLAN supported, port-based VLAN, IEEE 802.1Q VLAN tagging, voice VLAN and spanning tree configuration	Network/VLAN configuration, 802.1X control and radius VLAN and spanning tree configuration
QoS/ACL	Yes	Yes
Fan	Fanless (no noise)	Fanless (no noise)
Mounting	Desktop, Wall-Mount and Rack-mount (rack-mounting kits included)	Wall-mountable with mount brackets (kit included)
Compliance	FCC, CE, RCM, IC, UKCA	CE, FCC, IC
Management	Device management via SNMP, RMON, CLI, HTTPS, TR069, GWN Manager, GWN.Cloud	Device management via UniFi Controller
List Price	\$205	\$479



GWN7813P vs Unifi-USW-Pro-24-PoE



3 Free Wi-Fi Management Options

The GWN7813P offers 3 free management options: cloud based (GWN.Cloud), software based (GWN.Manager) and embedded (built-in to the web UI). This makes for easy management that is accessible from anywhere at anytime. Unifi-USW-Pro-24-PoE has only one management option via the Unifi Controller which is free, however the cloud hosted option needs to be paid for leading to extra costs.





Forwarding Rate

The GWN7813P has a forwarding rate of 95.232 mega packets per second proving that the GWN7813P will process the number of network packets quicker than the Unifi-USW-Pro-24-PoE that has a forwarding rate of 65.472 mega packets per second which is significantly lesser than the Unifi-USW-Pro-24-PoE.



List Price

The GWN7813P is the more cost effective model out of the 2 having a list price of \$459 whereas the Unifi-USW-Pro-24-PoE has a list price of \$589 even though the features of the GWN7813P are far superior than it's competitor.

	 GWN7813P	 Unifi-USW-Pro-24-PoE
Gigabit Ethernet Ports	24	24 Gbe RJ45 Ports
Gigabit SFP Ports	4 (10 Gigabit SFP+ Ports)	2 (1/10 Gigabit SFP+ Ports)
Serial Console Port	1	-
Number of PoE Ports	24	(16) PoE/PoE+ (Pins 1, 2+; 3, 6-) (8) 60W PoE++; PoE/PoE+ (Pins 1, 2+; 3, 6-) / PoE++ (Pair A 1, 2+; 3, 6-) (Pair B 4, 5+; 7, 8-)
Max Output Power Per PoE Port	60W(1-8,PoE++), 30W(9-24,PoE+)	64W(PoE++), 32W(PoE+)
Max Total PoE Output Power	360W	400W
PoE Standard	IEEE 802.3af/at/bt	IEEE 802.3af/at/bt
Total Non-Blocking Throughput	64 Gbps	44 Gbps
Switching Capability	128 Gbps	88 Gbps
Forwarding Rate	95.232 Mpps	65.472 Mpps
Switch Configuration	4k VLAN supported, port-based VLAN, IEEE 802.1Q VLAN tagging, voice VLAN, VLAN virtual interface and spanning tree configuration	Network/VLAN configuration, 802.1X control and radius VLAN and spanning tree configuration
QoS/ACL	Yes	Yes
Fan	3 fans	Fanless
Mounting	Desktop, Wall-Mount and Rack-mount (rack-mounting kits included)	Wall-mountable with mount brackets (kit included)
Compliance	FCC, CE, RCM, IC, UKCA	CE, FCC, IC
Management	Device management via SNMP, RMON, CLI, HTTPS, TR069, GWN Manager, GWN.Cloud	Device management via UniFi Controller
List Price	\$459	\$589



GWN7816 vs Unifi-USW-Pro-48



3 Free Wi-Fi Management Options

The GWN7816 offers 3 free management options: cloud based (GWN.Cloud), software based (GWN.Manager) and embedded (built-in to the web UI). This makes for easy management that is accessible from anywhere at anytime. Unifi USW-Pro-48 has only one management option via the Unifi Controller which is free, however the cloud hosted option needs to be paid for leading to extra costs.



Gigabit Ports

The GWN7816 has 48 ethernet ports and 6 SFP+ ports, which is more than the Unifi-USW-Pro-48 that has the same number of ethernet ports but only 4 SFP+ ports. The GWN7816P has a serial console port and an auxillary port, whereas the Unifi-USW-Pro-48 does not.



List Price

The GWN7816 is the more cost effective model out of the 2 having a list price of \$489 whereas the Unifi-USW-Pro-48 has a list price of \$589 even though the features of the GWN7816 are superior in certain aspects than it's competitor.

	 GWN7816	 Unifi-USW-Pro-48
Gigabit Ethernet Ports	48	48
Gigabit SFP Ports	6	4
Serial Console Port	1	no serial console port
Total Non-Blocking Throughput	108 Gbps	88 Gbps
Switching Capability	216 Gbps	176 Gbps
Forwarding Rate	160.704 Mpps	130.944 Mpps
Packet Buffer	16Mb	1.5Mb
Switch Configuration	4k VLAN supported, port-based VLAN, VLAN tagging and spanning tree configuration	Network/VLAN configuration, 802.1X control and radius VLAN and spanning tree configuration
QoS/ACL	Yes	Yes
Fan	4 fans	Fanless (no noise)
Mounting	Desktop and Rack mount (rack-mounting kits included)	Rack mount (kit included)
Operating Temperature	0°C to 45°C	-5°C to 45°C
Compliance	FCC, CE, RCM, IC, UKCA	FCC, CE, IC
Management	Embedded controller to manage switch; GWN. Cloud and GWN Manager, Grandstream's cloud and on-premise network management platform, CLI management	Device management via Unifi controller
List Price	\$489	\$589



GWN7816P vs Unifi-USW-Enterprise-48-PoE



3 Free Wi-Fi Management Options

The GWN7816P offers 3 free management options: cloud based (GWN.Cloud), software based (GWN.Manager) and embedded (built-in to the web UI). This makes for easy management that is accessible from anywhere at anytime. The Unifi-USW-Enterprise-48-PoE has only one management option via the Unifi Controller which is free, however the cloud hosted option needs to be paid for leading to extra costs.



PoE++

The GWN7816P is the only model that supports PoE++ on 8 out of the 48 ports. PoE++ is the next generation of PoE+ technology, allowing each PoE++ port to support 60W of output power port providing more power to the switch and the ability to support more bandwidth. The Unifi-USW-Enterprise-48-PoE does not have PoE++.



Gigabit Ports

The GWN7816P has 48 PoE ports and 6 SFP+ ports which is more than the Unifi-USW-Enterprise-48-PoE that has the same number of PoE ports and 4 SFP+ ports. Additionally the GWN7816P has a serial console port and an auxillary port.



GWN7816P

Unifi-USW-Enterprise-48-PoE

Gigabit Ethernet Ports	48	48
Gigabit SFP Ports	6	4
Serial Console Port	1	no serial console port
Number of PoE Ports	48	48
Max Output Power Per PoE Port	60W (ports 1-8, PoE++) 30W (ports 9-48)	34.2W (PoE+ only)
Max Total PoE Output Power	740W with 1 PSU	720W
PoE Standard	IEEE 802.3af/at/bt	IEEE 802.3af/at
Total Non-Blocking Throughput	108 Gbps	160 Gbps
Switching Capability	216 Gbps	320 Gbps
Forwarding Rate	160.704 Mpps	238.095 Mpps
Switch Configuration	4k VLAN supported, port-based VLAN, VLAN tagging and spanning tree configuration	Network/VLAN configuration, 802.1X control and radius VLAN and spanning tree configuration
QoS/ACL	Yes	Yes
Fan	4 Fans	fanless (no noise)
Mounting	Desktop and Rack mount (rack-mounting kits included)	Wall-mountable with mount brackets (kit included)
Compliance	FCC, CE, RCM, IC, UKCA	FCC, CE, IC
Management	Embedded controller to manage switch; GWN. Cloud and GWN Manager, Grandstream's cloud and on-premise network management platform, CLI management	Device management via Unifi controller
List Price	\$949	\$1599



GWN7832 vs Unifi USW Aggregation




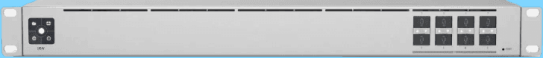
3 Free Wi-Fi Management Options

The GWN7832 offers 3 free management options: cloud based (GWN.Cloud), software based (GWN.Manager) and embedded (built-in to the web UI). This makes for easy management that is accessible from anywhere at anytime. Unifi USW Aggregation has only one management option via the Unifi Controller which is free, however the cloud hosted option needs to be paid for leading to extra costs.



Switching Capacity

The switching capacity of the GWN7832 IS 240Gbps which is higher than the Unifi USW Aggregation with has a switching capacity of 160Gbps. This indicates that the GWN7832 has the ability to exchange more data than it's competitor.

	 GWN7832	 Unifi USW Aggregation
Gigabit SFP Ports	12	8
Maximum No. of supported modules	SM-10G: 12 MM-10G: 12 RJ45-10G: 6	UACC-OM-MM-10G: 8 UACC-OM-SM-10G: 8 UACC-CM-RJ45-10G: 4 UACC-CM-RJ45-MG: 4
Integrated Power Supply	60W	30W
External Redundant Power Supply (RPS)	12V/60W	-
Auxillary Ports	1x Auxillary Port (Reset Pinhole)	-
Total Non-Blocking Throughput	120Gbps	80 Gbps
Switching Capability	240Gbps	160 Gbps
Forwarding Rate	80.352Mpps	119.04Mpps
Switching	<ul style="list-style-type: none"> • 4K VLANs, port-based VLAN, IEEE 802.1Q VLAN tagging, voice VLAN • VLAN virtual interface <ul style="list-style-type: none"> • GVRP(pending) • 6 link aggregation • Spanning tree, 64 instances for STP/RSTP/MSTP 	-
Routing	<ul style="list-style-type: none"> • Static routing • Dynamic routing, including RIP, RIPng, OSPF and OSPFv3 <ul style="list-style-type: none"> • Policy routing(pending) • DHCP server, DHCP relay, Option 82, 60, 160 and 43 	-
QoS/ACL	2K ACL for Ethernet, IPv4 and IPv6	Yes
Fan	2	Fanless
Mounting	Desktop, Wall-Mount or Rack-Mount(rack-mounting kits included)	Rack Mount
Compliance	FCC, CE, RCM, IC, UKCA	FCC, CE, IC
Management	Free management with GWN.Cloud and GWN Manager, Grandstream's cloud and on-premise network management platform	Unifi controller is free, however the cloud hosted option is paid